



# Spring Harvest

May 10-11, '25

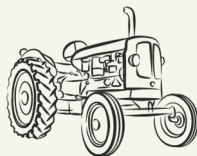
wander the back roads—explore new  
places—pick fresh berries—sample local  
wine—roam through fields of flowers—  
hop on a hayride!

It's all part of the Spring Harvest Tour  
Over 30 farms/orchards/ranches to choose from...all  
FREE to visit...south Georgia, north Florida.

coordinated by:



*Millstone Institute*



*Spring Harvest Tour*

*Our Grand Patron*

[millstonetallahassee@gmail.com](mailto:millstonetallahassee@gmail.com)

850.294.3918



*Millstone*  
 Institute of Preservation  
 Founded 1995

**YOUR 2025 SPRING HARVEST TOUR HOST/ORGANIZER**



Looking over the lake



Exploring the lake—learning to canoe



Hibiscus all summer long

**Our Mission:**

- Honor the Legacy
- Protect the Waters
- Celebrate the Spirit

The two annual farm tours are exciting projects for Millstone! Getting farms and community together is the best partnership!

*Millstone Institute is a Tallahassee based non profit with a wide ranging set of offerings for our community. We offer classes on sustainability topics and artisan skills. We are a venue for those wanting the beautiful north Florida backdrop for their special events. We have summer camps and weekend activities. We are a pro-level 18 hole Disc Golf Course. And we are a quiet respite for those needing a place to just wander and ponder!*

AND it snowed this year! A delicate blanket of white over the whole farm gave us a couple of days of sledding, a few snowball fights, confused horses, and chilly nights! A beautiful rare treat.



magical snow

2025 brings lots of activity to the farm:

Summer camps in arts, outdoorsmanship, sports and wildlife. Classes in sustainable arts and growing/gardening. Lazy days of disc golf!

Coordinating the Farm Tours!

Come volunteer!

For more information:

850.294.3918

millstonetallahassee@ gmail.com

The 2025 tour  
Grand Patron  
Madison TDC

SOUNDS LIKE

*Vintage Florida*

**MADISON  
COUNTY**  
FLORIDA

VISITMADISONFL.COM



## HOW TO USE THE TOUR GUIDEBOOK

The guidebook will provide you with a description of each location including what activities or food or Q & A or mini-workshops they may offer. Often the description will also give you a little background about the farm/ranch/garden.....important to note that each location will list what their hours are for the tour weekend. The last page is a map for general location.

You will also see contact information that you may use beyond the tour. The tour is a vehicle for you to get to know your local producers and use them throughout the year.

With each description you will also see the following icons—there will be stars by whatever service the location will be providing!

restrooms—handicap  
access— food available—  
items for sale—  
complimentary drinks



THOSE ICONS STARRED ARE THOSE AVAILABLE AT THIS SITE

workshop/Q & A—vendors—  
Find on Facebook/  
IG—web site - member  
Red Hills



# THE TOUR IS SELF GUIDED

You choose where and who you want to visit—check the hours the location is open. Participating farms, ranches, orchards, groves, gardens, etc. are spread out over several counties so you can determine how much of a road trip you want to tackle!

## TOUR GUIDELINES

Participating locations work very hard to open their farms for you and to provide a great experience. Please follow these guidelines.

**KEEP PETS AT HOME:** Call ahead for information about registered service dogs

**DO NOT VISIT BEFORE OR AFTER POSTED HOURS**

**DO NOT ENTER PRIVATE HOMES OR AREAS**

**KEEP EYES ON YOUR CHILDREN**

**ANYONE UNDER 16 MUST BE ACCOMPANIED BY AN ADULT**

**NEVER FEED FARM ANIMALS WITHOUT PERMISSION**

**FOLLOW ANY AND ALL POSTED SIGNS/RULES**

**HAVE LOADS OF FUN AND TAKE LOTS OF PICTURES**

## FOR YOUR BEST EXPERIENCE

**Bring a Cooler—there's lots of goodies to bring home!**

**Wear closed toe shoes—it's a farm and you want to protect those toes!**

**Bring along some sunscreen & bug spray.**

**Plan to carry cash as some locations will not accept credit cards.**



# Thank You

*To our Spring Harvest '25 sponsors*

Our GRAND Patron for the 2025 Spring Tour:



- |                               |                                      |
|-------------------------------|--------------------------------------|
| MADISON COUNTY TDC            | TALLAHASSEE FARMER'S MARKET          |
| JEFFERSON COUNTY TDC          | GEORGIA GROWN CITRUS                 |
| RED HILLS SMALL FARM ALLIANCE | PLAY OF SUNLIGHT MUKSHROOMS          |
| DEEP ROOTS MEATS              | JOHNSTON'S MEAT MARKET               |
| BENNETT SERVICES LLC          | TUPELO'S—MONTICELLO                  |
| PAMPERED TABLE                | JEFFERSON COUNTY CHAMBER OF COMMERCE |
| FARM CREDIT                   | FULL MOON APIARY                     |
| PINE DOVE                     | HOLLY WOODS & VINES                  |
| GRANNY KATS                   | SCHUCKELBERRY FARMS                  |
| ARROWHEAD BEEF                | FARM BUREAU—TALLAHASSEE              |
| FARM & FEED                   | ALLISON ACRES                        |
| WAUKEENAH FEED                | COLDWELL BANKER HARTUNG REALTY       |
| PRIME SOUTH REALTY            | NATIVE NURSERIES                     |
| LONGVIEW FARM & LAND CLEARING | MILLSTONE INSTITUTE                  |

# SAFETY ON THE FARM

There are things to be careful of on a farm—there’s equipment, livestock, sharp fence lines, wagons, and so forth, therefore it’s important to pay attention while you have fun!

There are state statutes in both Florida and Georgia that address having the public out on the farm.

## FLORIDA

*Under Florida law, an agritourism operator is not liable for injury or death of, or damage or loss to, a participant in an agritourism activity conducted at this location if such injury, death, damage, or loss results from the inherent risk of the agritourism activity. Inherent risks of agritourism include, among others, risks of injury inherent to land, equipment, and animals, as well as the potential for you to act in a negligent manner that may contribute to your injury death, damage, or loss You are assuming the risk of participating in this agritourism activity.*

*Under Georgia law, there is no liability for an injury or death of a participant at least 18 years of age in a registered agritourism activity conducted at a registered agritourism location if such injury or death results from the inherent risks of such agritourism activity. Inherent risks of agritourism activities include, but shall not be limited to, the potential for you to act in a negligent manner that may contribute to your injury or death and the potential of another participant to act in a negligent manner that may contribute to your injury or death You are assuming the risk of participating in this registered activity.*

*Under Georgia law, an owner or operator of a pick-your-own farm location is not liable for injury to or the death of a participant from the inherent risks of harvesting agricultural products pursuant to Article 7 of Chapter 14 of Title 2 of the Official Code of Georgia Annotated.*

## GEORGIA



# TABLE OF CONTENTS for farms/locations:

●	4 Pause Farm	Pelham, Goergia	page 9
●	Allison Acres	Pinetta, Georgia	page 10
●	Ayavilla Land Company LLC	Tallahassee, Florida	page 11
●	Blue Sky Farm	Monticello, Florida	page 13
●	Compost Community	Tallahassee, Florida	page 14
●	Deep Roots Meats	Greenville, Florida	page 16
●	Frenchtown Urban Farm	Tallahassee, Florida	page 18
●	Full Moon Apiary	Monticello, Florida	page 19
●	Georgia Grown Citrus	Ochlocknee, Georgia	page 20
●	Golden Acres Ranch	Monticello, Florida	page 21
●	Granny Kats –bee learning center	Monticello, Florida	page 23
●	Heart Bar Farm	Greenville, Florida	page 24
●	Holly Woods & Vines	Vernon, Florida	page 25
●	Johnston’s Meat Market	Monticello, Florida	page 26
●	Just Fruits and Exotics	Crawfordville, Florida	page 27
●	Legacy Greens	Tallahassee, Florida	page 30
●	Long Farms	Bainbridge, Georgia	page 30
●	Madison Seed Library	Madison, Florida	page 31
●	Moccasin Grove	Tallahassee, Florida	page 32
●	Monticello Vineyards	Monticello, Florida	page 33
●	Neighbor’s Farm	Tallahassee, Florida	page 34
●	Pine Dove	Tallahassee, Florida	page 35
●	Play of Sunlight Mushrooms	Tallahassee, Florida	page 36
●	Prairie Lake Farm	Tallahassee, Florida	page 37
●	Promised Land Homestead	Lee, Florida	page 38
●	Promise Land Urban Farm	Tallahassee, Florida	page 39
●	Saldino’s Red Barn Farm	Crawfordville, Florida	page 40
●	Sandhills Native Nursery	Fountain, Florida	page 42
●	Schuckelberry Farms	Clarksville, Florida	page 43
●	Southern Craft Creamery	Marianna, Florida	page 44
●	Sweet Magnolia Ridge	Havana, Florida	page 44
●	Timber Bamboo Nursery	Monticello, Florida	page 45



**Breads and baked goods**

**Florida honey**

**Goats' milk body products**

**Fresh flowers**

**Elderberry products**

**Local produce**

**Poultry, beef and eggs**

**Jams and jellies**

**Wednesdays 4:00-6:30 PM**

**Located at the Courthouse Circle in Historic Monticello**



**Brought to your community by the**

**JEFFERSON COUNTY  
TOURIST DEVELOPMENT  
COUNCIL**

*Experience Our History and Create Your Own*

VISITJEFFERSONCOUNTYFLORIDA.COM  
FACEBOOK.COM/MONTICELLOMARKETFL



# 4 PAUSE FARM:

1004 Wilder Road

Grady County, Pelham, Georgia

229.602.8766

info@4PauseFaarm

Facebook & IG: 4pausefarm

**CONTACT:** Melissa Marston

**HOURS:** Saturday, May 10—11:00 AM—4:00 PM



THOSE ICONS STARRED ARE THOSE AVAILABLE AT THIS SITE

It all started with an awareness that something had to change and a lot of prayers that led to a cross-country move (complete with melted butter dripping out of a crushed food box—eww) followed by the addition of twelve straight run Bantam chicks (8 roosters, 4 hens, lesson #2 learned!)

Today we are a small farm living out our dream with a staff of two. Come see how trusting faith and seed throwing mixes with an engineer's organized, exact approach to life and the fruits of those labors on our small, growing farm. While our journey has been far from perfect or easy, we started, have added, and are persisting toward fulfillment of this dream. With plenty of unexpected challenges and more blessings than we can count, we are learning as we go and finding the joy even in the tough stuff!

In less than three years, we have grown to a farm of assorted chickens, Nubian goats (really they are just divas with hooves!) a

bunch of Kunekune pigs that we are raising for breeding and more, a Dexter cow couple that we hope will bring us all the gifts of dairy, and a few hives of honeybees that provide us with delicious, nutritious, healing liquid gold. Our LGD (livestock guardian dogs) Moses and Aaron, have a full time job managing it all as we get the privilege of trying to steward it with grace every day while working away from the farm as we look forward to the future.

Come walk with us—share your dreams—and be inspired to take a pause or 4.

**DIRECTIONS:** We are located in Grady County Georgia, just over a mile from highway 112 and 2 miles from route 93 on Wilder Road. (take 93 north out of Cairo.)

Just look for our Farm Tour signs and "M" at our driveway.



**FARM & FEED**  
COMPLETE ANIMAL NUTRITION

**proud to be your one stop shop**

**3600 Weems Road—Tallahassee, FL**

**850.877.0932**

*Happy to support our regional farm tours!*



# ALLISON ACRES:

9077 NE Colin Kelly Highway

Pinetta, Florida

850.464.7917 --- 850.464.6877

jbilly@allison-acres.com hank@allison-acres.com

Facebook: @AllisonAcresBBFarm.com

**CONTACT:** Jessica Billy - Hank Allison

**HOURS:** Saturday, May 10—9:00 AM—2:00 PM

**PRESENTATIONS/WORKSHOPS:** How to care for your blueberry plants!

We are a 218 acre organic blueberry farm. We will offer U-Pick as well as blueberries for sale. Like most farms, we add and change things up looking for the best crop for our location and the best addition to offer our community. We have added May-haws as well as Christmas trees!

We follow best practices, including; water management, nutrient management and integrated pest management.

During the Spring Harvest Tour we will also have local farmers, producers, and growers as vendors to share their bounty! And



THOSE ICONS STARRED ARE THOSE AVAILABLE AT THIS SITE

we will be offering hayrides to help you explore the farm and you can see where we will be adding our new riding trails!

**DIRECTIONS:** From Tallahassee head east on I 10—follow I 10 East to 14E in Madison County. Take exit 251 to the north from I 10 and follow 14E to Florida 145 north toward Pinetta. ( 145N is the same as Colin Kelly Highway) Look for 9077 NE Colin Kelly Hwy.

From Lake City take I 10 West to Florida 53 in Madison County. Take exit 258 and follow Florida 53 north to Florida 145 north (this is Colin Kelly Highway)) heading toward Pinetta. Look for our signs at 9077 NE Colin Kelly Hwy.



Financing for People who

**LIVE, WORK OR PLAY**  
in the Country

NO ACREAGE LIMITATIONS  
HOME & HOME CONSTRUCTION  
EQUIPMENT LOANS

Scan to  
Learn More



 **FARM CREDIT**  
OF NORTHWEST FLORIDA

855-GoRural | www.GoRural.net

NML58 699418 



1480 W. Washington St.  
Monticello FL, 32344  
(850) 997-5622  
johnstonsmeatmarket.com



See first hand how we have made our Smoked Sausage in an Old Fashion Smoke House for the last 30 years.

---

Take a tour of our of our USDA certified processing facilities. 

---

Stock your freezer with either 1/4, 1/2 or whole cow. 

# AYAVALLA LAND COMPANY LLC:

7190 Old Bainbridge Road

Tallahassee, Florida

850.508.5143

Ayavalla Land Company.com

**CONTACT:** Tracy Richardson

**HOURS:** Saturday, May 10 - 9:00 AM—4:00 PM

Ayavalla is about 5,000 acres along the north shore of Lake Jackson. It consists of rolling hills, wetlands and a wide prairie near the level of the lake.

Since the 1930's, the Phipps Family has the honor of maintaining this beautiful property. Because of this maintenance, the general public can now launch a boat in Lake Jackson, travel north through "the Cattle Gap" and see wild Florida as it existed thousands of years ago. Our mission is to continue this stewardship far into the future with a blend of regenerative agriculture, eco-tourism and other enterprises that are in keeping with the natural character of the land.

We intentionally manage our pastures to encourage native grasses and legumes to provide a tasty treat for our cattle and all of the wildlife that live on our land. Our entire property is managed without chemicals. This includes herbicides, pesticides, fungicides and chemical fertilizers and we use no-till planting



THOSE ICONS STARRED ARE THOSE AVAILABLE AT THIS SITE

whenever practical. Our cattle receive no hormones, vaccines or parasite medications and we use no synthetic fertilizers.

Our cattle roam on ancient pastures throughout Ayavalla, mimicking buffalo herds in the wild. We have Mashona cattle—they are different because they are perfectly adapted to our climate. They are a breed from Zimbabwe which has the same climate and forage quality as our area. They are so hardy they need no medicine to stay healthy—just grass and water and minerals.

We welcome you during the Spring Harvest Tour to see portions of our land, our cattle, and our market garden. We will offer taste testing of our beef and offer burger from our cattle for you to purchase.

**DIRECTIONS:** From Tallahassee or I 10, travel north on US 27 until you pass Lake Jackson, on your right, and come to the intersection of US 27 and Old Bainbridge Road. Turn right onto Old Bainbridge and follow to 7190 Old Bainbridge—follow signs.



*Let us help you make meals memorable.*

kitchenware - cookware - bakeware - tabletop - classes

[www.tptkitchenshop.com](http://www.tptkitchenshop.com)

Located in Bannerman Crossings  
3425 Bannerman Rd. Ste. 104  
Tallahassee, FL 32312  
850-354-8352



## ***Why a farm tour?***

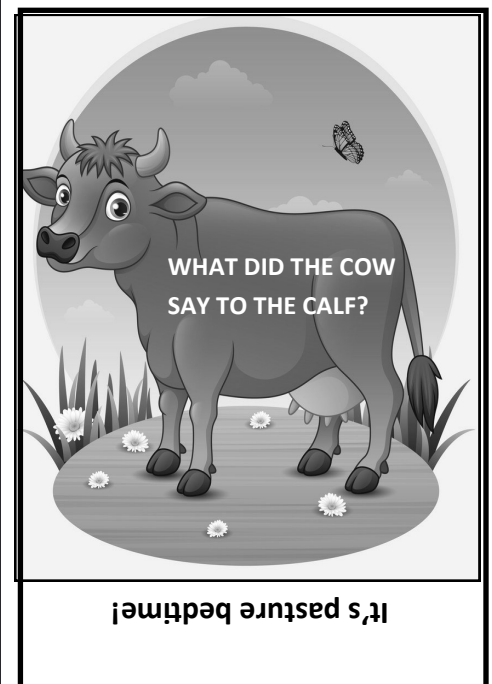
*The real reason? For getting out and seeing where our food is grown/raised and for meeting those who raise/grow and nurture all of us...to develop partnerships with our farmers.*

*We are so fortunate in this region to have a multitude of small farms AND to be a region where homesteading is a rapidly growing industry.*

*On the tour you'll see gorgeous large properties that have been in the same family for generations and you'll see amazingly productive very small parcels of land that produce enough for neighbors and friends. You'll meet long time farm families and also meet "newbies" beginning with just a dream.*

*Our partnerships make the Farm Tours happen. Each year we do a spring tour and a fall tour covering 11-12 counties. This tour would not happen without local sponsors and partners...and most especially the partner who is so supportive they are the Grand Patron of the Tour. The Spring Harvest Tour is deeply grateful to our 2025 Grand Patron:*

**Madison County TDC**



# BLUE SKY FARM: (U-Pick)

1180 Ashville Highway

Monticello, Florida

850.566.4182

rose@bskyfarm.com

Facebook: Blue Sky Berry Farm

Web: bskyfarm.com

**CONTACT:** Rose Murray

**HOURS:** Saturday May 10—8:00 AM—4:00 PM

Sunday May 11—8:00 AM—4:00 PM



THOSE ICONS STARRED ARE THOSE AVAILABLE AT THIS SITE

**WORKSHOPS/PRESENTATIONS:** Blue Sky Farm will offer flower learning workshops during the Spring Harvest Tour. **PRE REGISTRATION IS REQUIRED—PLEASE CALL AHEAD!** Seed starting, harvest tips to extended vase life and more!

**Flowers For Mother’s Day !**

Six acres in the rolling hills of Jefferson County, the farm was established in 2012 as a U-Pick blueberry farm. In 2020 flowers were added and expanded each season since.

Now home to free-range peacocks and The Flower Bar. Blue Sky

Farm is a popular destination for flower learning and harvesting. May sees the farm at its flowering best!

We offer U-Pick flowers by the cup and by the bucket. Photo options are endless.

**DIRECTIONS:** Just two miles from the Historic Monticello Town Center, take Hwy 90 east for 1 mile then turn left on CR 146 for 1 block, then right on Ashville Highway. The farm is located at 1180 Ashville Highway.



TASTES LIKE

*Vintage Florida*

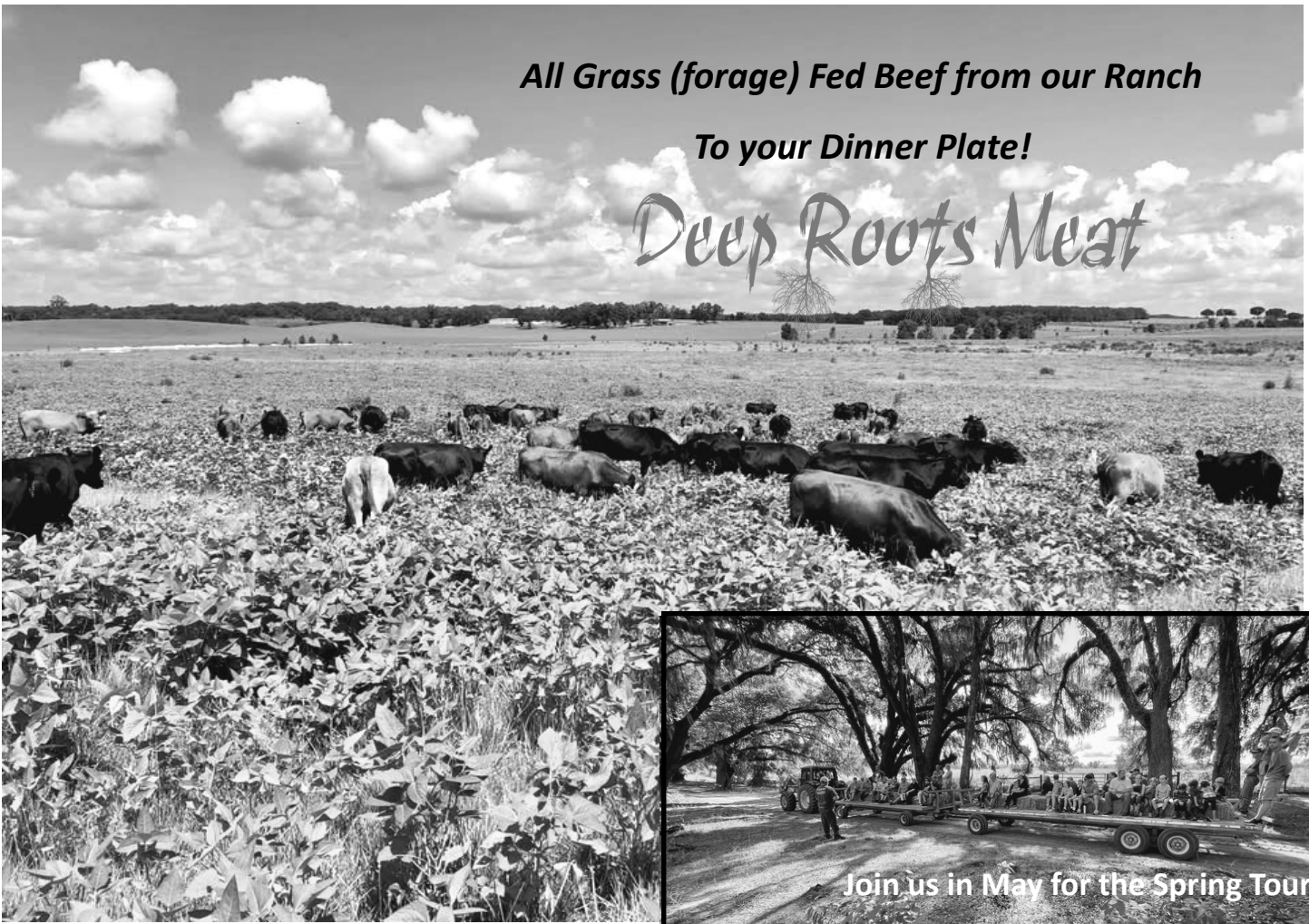
11:1 Lakeside Diner | 850.253.5953  
 C & E Market Place | 850.253.2191  
 Cornerstone Cafe | 850.971.5199  
 Corner Kitchen Cafe | 850.253.2333  
 Cucinella’s Pizzeria | 850.973.3388  
 DownTown Nutrition | 850.843.0052  
 Frank’s Fry House | 850.973.4538  
 Grumpy’s Diner | 850.973.2802  
 J’s Smoothie | 850.405.4967  
 Madison Coffee Company | 850.253.2438  
 Madison Manor House | 888.796.2667  
 Mama’s Italian | 850.223.1109  
 Madison Nutrition | 850.973.7681

Mother’s Soup Company | 850.973.0755  
 Norris Cafe | 850.973.2552  
 O’Neal’s Buffet | 850.973.6400  
 Red Onion Grill | 850.971.4240  
 Rancho Grande | 850.973.2363  
 Rockin’ Wheels | 850.280.1763  
 Vittles Food Truck | 850.849.5994



# COMPOST COMMUNITY:

SEE OUR INFORMATION UNDER FRENCHTOWN URBAN FARM



Contact: 850.464.4614

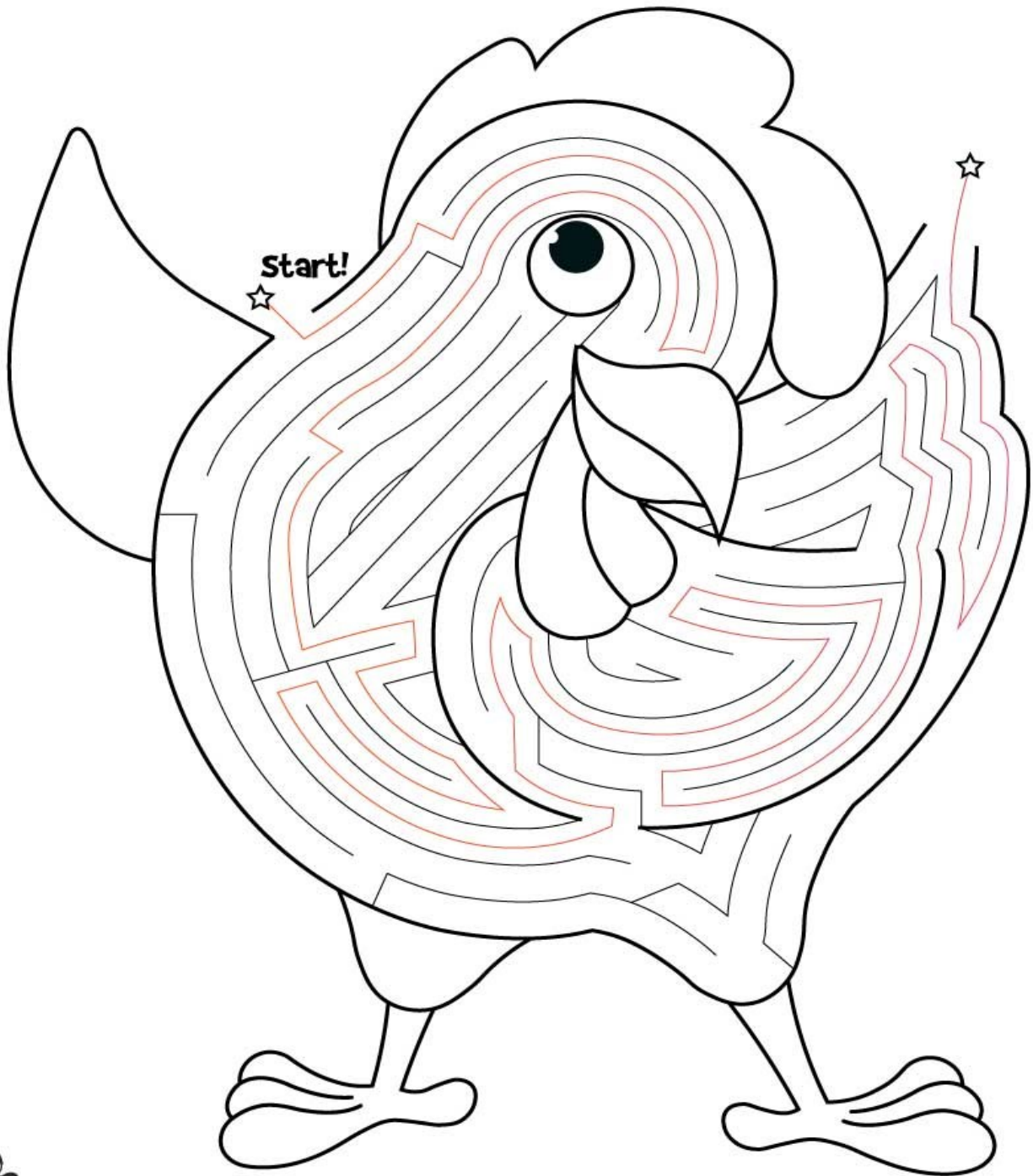
[deerootsmeat@yahoo.com](mailto:deerootsmeat@yahoo.com)

Join us in May for the Spring Tour!

Deep Roots Meats—Greenville

**Can you get all the way through the chick?**

# **Chicken Maze!**



# DEEP ROOTS MEATS:

11061 West US 90

Greenville, Florida

850.464.4614

deeprrootsmeat@yahoo.com

www.deeprrootsmeat.com

Facebook: Deep Roots Meat

**CONTACT:** Troy Platt



THOSE ICONS STARRED ARE THOSE AVAILABLE AT THIS SITE

**HOURS:** Saturday May 10—9:00 AM—5:00 PM

Sunday May 11—11:00 AM—4:00 PM

**HAYRIDES:** Saturday: 10 AM, 12 Noon & 2 PM

Sunday: 12 noon & 2 PM

**DEEP ROOTS MEAT** is owned and operated by the Platt Family. The Platt Family has raised cattle in Florida for six generations. We are proud to bring you nutrient-dense **All Grass (Forage) Fed Beef** from our ranch to your dinner plate! We also have Pasture-Raised Pork, Pasture-Raised Chicken, and Farm Fresh Eggs.

## What makes our cattle **UNIQUE?**

Our Angus influenced cattle are bred, born and raised on our ranch.

They only eat **HIGH QUALITY** grasses, forages and hay that we grow and bale.

We only use **ORGANIC** fertilizers such as fish emulsions and seaweed.

Our cattle are **ROTATIONALLY** grazed on our pastures.

Our cattle are **NOT** fed any grain or animal by-products.

We do **NOT** supplement our cattle with GMOs.

Our cattle are **NEVER** given antibiotics, hormones, or mRNA vaccines.

We have **DUNG BEETLES** and **EARTHWORMS**—signifying healthy soil!

We use **LOW STRESS** handling techniques that make for **HAPPY COWS!**

**“These practices insure the healthiest, most delicious beef you can eat!”**

We are proud to say you can eat our ground beef without **ANY** seasonings—not even salt and pepper.

**BRING A COOLER !!! We accept cash, check, or credit cards.**

## Available for purchase:

- **USDA** individually packaged **beef** and **pork**
- **Whole Chickens**
- **Farm Fresh Chicken Eggs**
- **Fresh Cooked Deep Roots Meat Burgers**
- **Ice Cold Bottled Water**

Try **FREE** samples of our **BEEF** and **PORK** products.

Go on our educational **HAYRIDE** and see how we produce your food!

**DIRECTIONS:** From Tallahassee, take I 10 East to exit 241 (US221) for Greenville. Head north on US 221 to the intersection of Hwy 90. Turn right and go about 2.5 miles. We are the mailbox marked 11061 on the right after Hickory Hill Way (a dirt road on the right) Turn into our drive, cross the tracks and follow signs. **NOTE: GPS is not always accurate with our address**





# FORTY CREEK FARMS:

1377 Cuba Road

Blakley, Georgia

229.308.8775

HARVEST@FORTYCREEKFARMS.COM

www.fortycreekfarms.com

**CONTACT:** Cyle & Amber Sapp

**HOURS:** Saturday May 10—10:00 AM—4:00 PM

Sunday May 11—10:00 AM—4:00 PM

## PRESENTATIONS/WORKSHOPS:

*Sustainable Gardening Practices @ 11:00 AM*

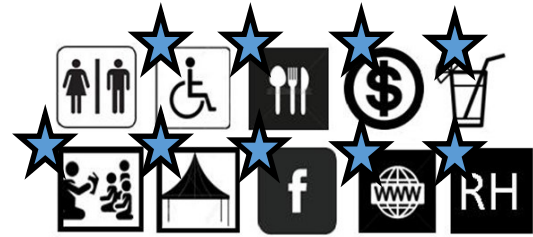
*Beefalo Meet & Greet @ 1:00 PM*

*Chicken & Quail Incubating & Brooding @ 3:00 PM*

WELCOME! At Forty Creek Farm, we practice best management by crop rotation, mulching, natural pest management, pruning, companion planting and with a large focus on soil health.

Join us for a Spring Farm Tour that showcases the season's freshest offerings! Explore our gardens where early crops like radishes, broccoli and carrots are flourishing. We'll share our sustainable farming practices that nurture these crops, ensuring they grow in harmony with nature.

Meet our impressive beefalo, a crossbreed of bison and cattle, raised on mixed forage for lean, flavorful meat. Learn about



THOSE ICONS STARRED ARE THOSE AVAILABLE AT THIS SITE

their unique qualities and how we responsibly raise and harvest them.

Discover our quail operation, where we raise these elegant birds for their tender, flavorful meat and their delicious eggs. We'll explain how we ensure a stress-free environment for our quail, producing top quality meat for your table.

Finally, visit our happy flock of hens. Our hens provide rich, flavorful eggs with vibrant yolks. Learn how we care for them to ensure the freshest eggs possible.

The tour is a perfect way to connect with spring on the farm and see how we care for our crops and animals while producing the best of the season's food. Join us for a day of fresh air, learning and delicious flavors!

**DIRECTIONS:** from Tallahassee, follow Highway 27 north into Georgia. You will go through Bainbridge and Colquitt and on north toward Blakley. You'll turn left onto Cuba Road. Our farm is approximately 1.5 miles on the right.



Coldwell Banker Hartung has been fulfilling the Dream of Home since 1979. During that time, we have become one of the most trusted and respected real estate firms in Tallahassee, FL. We provide real estate services to the Tallahassee Metropolitan Service Area, including [Leon](#), [Wakulla](#), [Gadsden](#), [Liberty](#), [Franklin](#), and [Jefferson](#) counties, as well as [Thomasville](#), Georgia and its surrounding counties.

COLDWELL BANKER HARTUNG—850.386.6160



# FRENCHTOWN URBAN FARM/

# COMPOST COMMUNITY

514 Dunn Street

Tallahassee, Florida

850.497.4306

frenchtownurbanfarm@gmail.org

www.compostcommunity.org

**CONTACT:** Sundiata El

**HOURS:** Saturday, May 10, 9:00 AM—3:00 PM

### WORKSHOPS/PRESENTATIONS:

Composting 101 and scaling up your system.

Making compost and compost tea.

No hassle seed starting.

Compost Community operates on the site of Frenchtown Urban Farm. We also border a community garden and beekeeper! We are a small 1/3 of an acre farm that is a demonstration site for our compost and vegetable production

We produce all of our own soil amendments and utilize that compost to grow all of our own food naturally without any



THOSE ICONS STARRED ARE THOSE AVAILABLE AT THIS SITE

chemical or synthetic additives.

We have fruit trees on site, along with a vermicompost system for those interested in red wiggler worms. Every day we tend to 7-10 compost piles. We utilize best compost practices, adhering to organic standards for compost production.

**DIRECTIONS:** From the **north:** south on Old Bainbridge and right on Dunn. From the **south:** north on Macomb, cross Brevard and left on Dunn. From the **east;** west on Tennessee St (Hwy 90), right on Macomb, cross Brevard and left on Dunn. From the **west east** on Tennessee (Hwy 90) left on Macomb, cross Brevard and left on Dunn.

## Hang Tough Foundation



[www.hangtoughfoundation.org](http://www.hangtoughfoundation.org)



The Hang Tough Foundation offers resources and encouragement to families during their journey with childhood illness and special needs.



Learn more about us today and how you can get involved!

“  
*The farmer is the only man in our economy who buys everything at retail, sells everything at wholesale, and pays the freight both ways.*”

John F. Kennedy

# FULL MOON APIARY:

220 W Washington Street

Monticello, Florida'

850.242.1579

info@flahoney.com

www.fullmoonhoney.com

**CONTACT:** Tony Hogg

We will be offering continuous discussions on how to get started with keeping bees as well as tips on how we manage the bees in our care. We will have samples of different honey varieties.

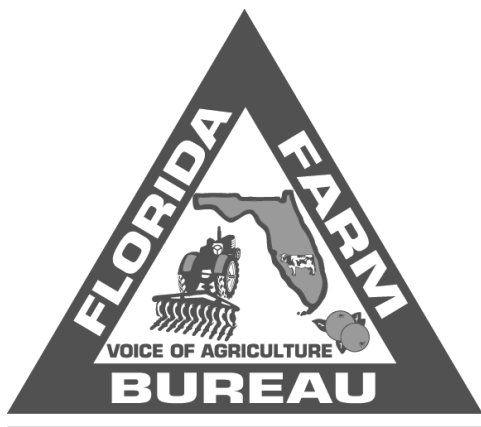
We will be gathering at our retail location where you will see many honey and bee related products.

The Full Moon Farm retail store is located inside Tupelo's Bakery and café. Grab a treat at Tupelo's while you're here!

**DIRECTIONS:** Full Moon Retail and Tupelo's Bakers are located downtown Monticello, west of the courthouse on Hwy 90 (W Washington)



THOSE ICONS STARRED ARE THOSE AVAILABLE AT THIS SITE



LEON COUNTY

The Leon County Farm Bureau works to preserve and promote agriculture, and to protect the American family and farm.

Our membership benefits are second to none—the discounts, gifts, and services available to Farm Bureau members are exciting!

To learn more or to join Leon County Farm Bureau: 850.877.6581

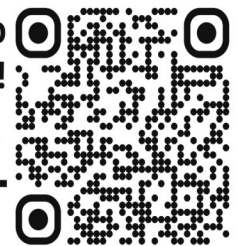
**Play of Sunlight**  
MUSHROOMS

Grown in Tallahassee, FL



Local Pickup  
Now Available!

Scan to order



To learn about us visit: [playofsunlight.com](http://playofsunlight.com)

# GEORGIA GROWN CITRUS:

2273 Malloy Road

Ochlocknee, Georgia

229.234.2797

georgiagrowncitrus@gmail.com

www.georgiagrowncitrus.com

**CONTACT:** Lindy Savelle

**HOURS:** Saturday May 10, 10:00 AM—3:00PM



THOSE ICONS STARRED ARE THOSE AVAILABLE AT THIS SITE



JoNina Farm is home to a 5 acre citrus grove and a USDA certified citrus nursery called Georgia Grown Citrus. When you visit, you can purchase citrus trees from our nursery and learn about how to grow them in our region. We also have a storefront where you can purchase our shirts, jellies, ice cream, our Simply Citrus Cookbook and various Georgia Grown Citrus tree products.

**DIRECTIONS:** When heading north on US 19 out of Monticello (from Hwy 90 or I 10) you will take a left hand turn on Rupp Road ( approximately 30 minutes.) After 3 miles take a sharp right hand turn on to a dirt road called Malloy Road. Continue for about a half mile and on your left you will see gates, a little white building, and a pond. Turn left through the gates and follow the road to the designated parking area. There will be signs along Malloy Road to guide you.



“ quotable ”

My dream is to become a farmer.  
Just a Bohemian guy pulling up  
his own sweet potatoes for dinner.

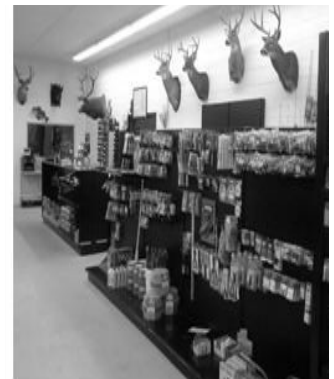
Lenny Kravitz



LENNY KRAVITZ

## waukeenah fertilizer & feed

- Farm & garden
- Hunting & skeet
- Beekeeping
- Camping
- Feed
- Fencing & gates



Easy drive out Hwy 27 to Waukeenah!

850.997.4460

SUPPORTING THE FARM TOURS

# GOLDEN ACRES RANCH:

704 Barnes Road

Monticello, Florida 32344

850.508.2607

Bobbie.golden@gmail.com

www.goldenacresranch.com

Facebook: goldenacresranch

**CONTACT:** Bobbie Golden

**HOURS:** SATURDAY, MAY 10, 10:00 AM—3:00 PM

SUNDAY, MAY 11, 10:00 AM —3:00 PM

Our family farm began in 2001 and has evolved over time...different crops, different livestock...working to find the best balance for our family and for our land. One thing that hasn't changed is we have about the largest Mayhaw grove in the area. With the Spring Harvest Tour we are able to share more about our native Mayhaw trees and the very tasty berries they produce. We'll have samples and can share how to make the best Mayhaw jelly!

Golden Acres is also home to goats and sheep. You'll see some

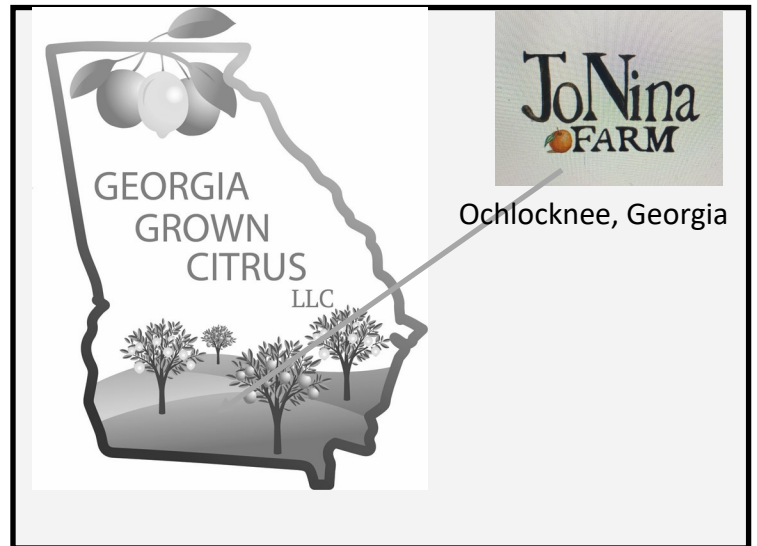
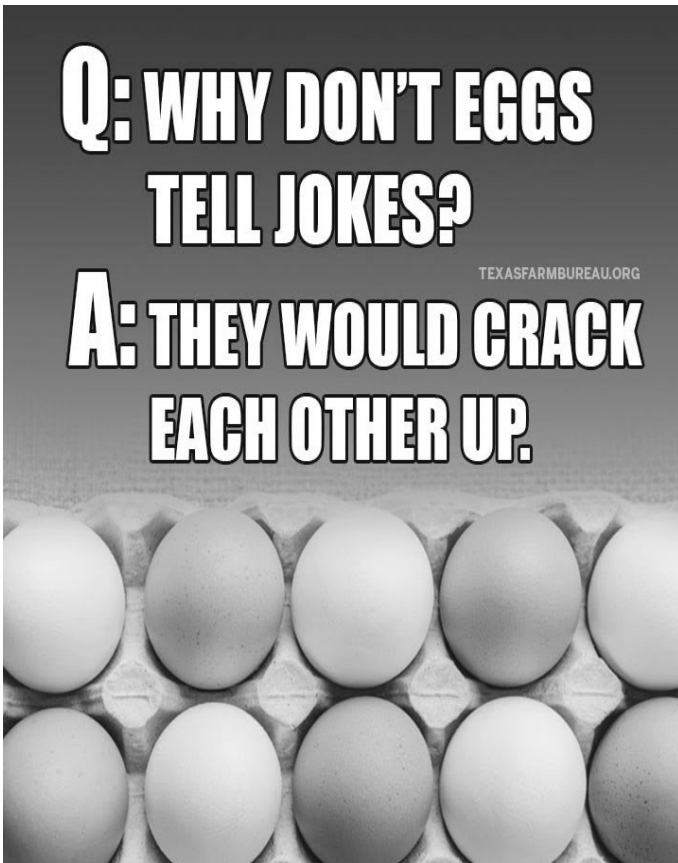


THOSE ICONS STARRED ARE THOSE AVAILABLE AT THIS SITE

of our lively young goats born this year! And you'll see our Great Pyrenees who keep our farm safe.

We invite you to tour the farm and visit the Country Store where you'll find farm goodies and local crafts. Along with our usual farm activities we also have a boarding kennel. In addition Golden Acres Ranch is a Harvest Host site.

**DIRECTIONS:** From the courthouse round-about in Monticello, head north on Hwy 19. Go 4 miles north to Barnes Road (a large sign on the right) Turn right and travel 3/4 of a mile to our driveway. Follow signage.



# FRESH, LOCAL, DELIVERED



## Supporting Local Farmers Enriching Local Life

### If you're not participating in our online market, you're missing out!

We make it super easy for you to enjoy fresh, seasonal produce from local farms—delivered right to your doorstep or a convenient pick-up hub.

More than 100 farmers & producers from within 100 miles of Tallahassee provide local families:

- *High-quality, locally-grown produce*
- *Meat*
- *Eggs*
- *Cheese*
- *Baked goods*
- *Garden plants*
- *and a lot more!*



Many of the farmers on this tour offer their products on the RHSFA Online Market—Take a look!



**Before making purchases as a customer, or posting products to sell as a producer/farmer, please register.**

*It only takes a minute!*

SAVE  
**10%**

First-time customers can enjoy a 10% discount on their first order!  
Simply enter 'Farm Tour' in the customer notes when placing your order.

[www.RedHillsSFA.com](http://www.RedHillsSFA.com)

# GRANNY KATS: apiary supply &

## bee learning center:

407 Industrial Park Road

Monticello, Florida

850.997.1947

beesupplies@grannykats.com

www.grannykats.com

Facebook: Granny Kats apiary supply & bee learning center

**CONTACT:** Kathryn Gohlke

**HOURS:** Saturday, May 10, 9:00 AM—5:00 PM

Sunday, May 11, 9:00 AM—5:00 PM

**WORKSHOP/PRESENTATION:** At 2:00 PM we will give a presentation on bees and beekeeping equipment.

GRANNY KAT FEATURES ARE:

- A bee keeping yard with many working hives.
- An observation hive in our learning center.
- Microscope display in our learning center.
- Beginner beekeeping classes quarterly.
- Honey processing kitchen.
- Bee supplies for all your beekeeping needs.
- Gift shop with many bee themed items.

Field trips available upon request for schools, homeschool



THOSE ICONS STARRED ARE THOSE AVAILABLE AT THIS SITE

groups (minimum 10) and other organizations

Granny Kat's annual plant swap and sale will be held the weekend of May 10th and 11th.. Bring up to 5 plants( 1 gal or smaller) and trade for other plants people bring. We will also have plants for sale!

Please contact Kathy at 850.997.1947 or email at beesupplies@grannykats.com

**DIRECTIONS:** take Hwy 19 south from the Monticello courthouse to Industrial Park Road—about 3.5 miles. Make a right and go to the end of the road—we are on the left.

From I 10— go north on Hwy 19 toward Monticello. Industrial Park Road is on the left about 2.5 miles. Go to the end of Industrial Park Road—we are on the left.



# HEART BAR FARM:

4641 NW Honey Lake Road

Greenville, Florida 32331

239.209.6153

pastured@heartbarfarm.com

www.heartbarfarm.com

Facebook: Heart Bar Farm

**CONTACT:** Eric & Jennifer Anderson

**HOURS:** Saturday, May 10, 10:00M—4:00 PM

*FARM WALKING TOURS—ON THE HOUR BEGINNING AT 11:00*

Our farm is named after an old family cattle brand that dates back to 1971. “Heart Bar” was one of the last brands used by Eric’s grandfather to identify his cattle statewide in Florida. We do not brand any of our cattle today but desired to pay tribute to the legacy that inspired this farming journey which has now become more than we even imagined.

One of the highest pillars of consideration in our farm management focuses on reducing the potential toxins that are present in the food we produce. Have you ever considered that what your meat eats will have a direct correlation to the available nutrition and potential toxins that end up on your plate? We think about it and believe you should too!

Come see us to learn about rotational grazing methods that help build our organic matter and soil health. Learn about how we nourish our beef, chicken, eggs, and pork with species appropriate food and how we strive to avoid toxic additions to our food supply. For example, we do not use any chemical fertilizers, chemical dewormers, or chemical pesticides for insects, fungi or weeds.

There are other ways! It just takes a proactive and patient approach. Our cows eat grasses and forages in addition to kelp, minerals, and salt. All chickens and pigs are fed a high quality



THOSE ICONS STARRED ARE THOSE AVAILABLE AT THIS SITE

certified organic, soy-free , corn free feed from Reedy Fork Organic Farm.

Are you interested in seeing pasture-raised farming methods, using slower growing livestock?

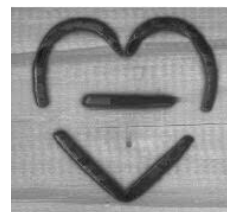
We have chosen slower growing meat chickens, smaller lard pigs, and are working on a more diversified beef cow herd. Even our egg-laying chickens are a varied mix of hybrid and heritage breeds that play a very important role on the farm.

Be sure to wear shoes that you don’t mind getting a little dirty as we take you on a scenic walking tour of the farm!

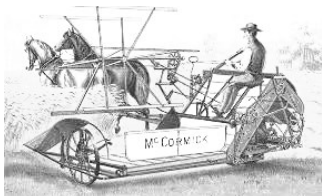
Farm products will be available for purchase—so bring a cooler!

**DIRECTIONS:** From Tallahassee, take I 10 east to exit #233. After exiting, turn left onto Salt Road. There will e a stop sign in about 3.5 miles where you will turn right onto Hwy 90 (E Washington Hwy.) Next, in approximately 3.1 miles turn left onto NW Honey Lake Road. Then in approximately 4.6 miles, the farm will be on your left.

From Madison, take Highway 90 to the west and turn right onto US 221 in about 3.2 miles turn left onto NW Honey Lake Rd. In approximately 1 mile the farm will be on your right.



## Fun fact:



Cyrus McCormick went bankrupt after the panic of 1837. He lost his farm & everything he owned was put up for sale...with the exception of one item which was deemed to be worthless by his creditors: his recently invented mechanical harvester!



# HOLLY WOODS & VINES/ DLA Ranch:

2981 Rodeo Drive

Vernon, Florida

202.528.0340

jjohnston@hollywoodsandvines.com

www.hollywoodsandvines.com

**CONTACT:** John Johnston

**HOURS:** Saturday, May 10, 10 AM—6:00 PM

Sunday, May 11, 10:00 AM—2:00 PM

*Come west Saturday and end your tour with us! Sunset cattle drive and fireside cookout!*

- *cattle drive starts at 4 PM—food 5-6 PM. Limited to 100 ! First responders all inclusive, MUST CALL AND RESERVE!!!!*

John and Vanessa Johnston have always kept their eyes focused on the next big business venture. In 1990 they purchased a company specializing in exterior hotel maintenance and convention plant rentals and names it Ingleside Horticultural Enterprises (IHE.) They took IHE to an abandoned gas station in Alexandria, Virginia. By 1996 they had turned that gas station into a flourishing garden enter—the landscape an convention business also flourished.

In 1996 IHE set its goals on acquiring a large garden center—it was successful and the business was renamed *Holly Woods and Vines* " a whimsical oasis of horticultural delights."

HWV thrived and grew for the next 25 years. In 2015, looking toward retirement, we purchased a 120 acre farm for our vision of growing nursery stock for e-commerce. At the end of 2021 we sold the garden center and moved full time to Florida, where we focus on plants suitable for growing in this regions like cold hardy palms, camelias, and grafted Japanese Maples.



THOSE ICONS STARRED ARE THOSE AVAILABLE AT THIS SITE

## DLA RANCH:

DLA Ranch is a uniquely diversified operation that pairs progressive agriculture with traditional ranching. Our herds are mindfully managed for your family. As stewards of the land, we integrate natural fertilizers, rotational grazing, and monoculture plantings to minimize our impact and elevate our cattle's health, productivity, and to reduce their footprint.

Our herds are handled on horseback by our cowboy and his family, as cattle have been for centuries. They live in expansive grass pastures enjoying natural shade and relaxed social structure that allows them to thrive.

Every animal is an individual who is cared for with generations of knowledge. Our custom Wagyu and Akaushi beef products are a result of our mindful management, offering a premium eating experience that your family can trust.

So come to our ranch, tour our pasture, meet our cowboys and experience the DLA difference.

**DIRECTIONS:** From I 10, take Exit 112 (Highway 79) south to creek road. Left on Dorch Circle (2 entrances) and bear to the right at the cemetery onto the dirt road, Mallard Pond Lane. Follow the dirt road through Farm Gate Road, now named Rodeo Drive. Second house on the left 2918 Rodeo Drive.

**NOTE:** we accept cash or checks—no credit cards. Thank you

# JOHNSTON'S MEAT MARKET:

1480 West Washington

Monticello, Florida

850.997.5622

pfig@johnstonsmeatmarket.com

www.johnstonsmeatmarket.com

**CONTACT:** Patrick Figueroa

**HOURS:** Saturday May 10, 8:00 AM—5:00 PM



THOSE ICONS STARRED ARE THOSE AVAILABLE AT THIS SITE

Johnston's will be open for the Spring Farm Tour on Saturday, May 10 th, from 8:00 am until 5:00 pm. We are not open on Sunday.

Johnston's will be giving tours of our USDA meat processing areas all day Saturday. Tours usually last about 15-20 minutes. In addition, we will show how Johnston's sausage is made and smoked in our old-fashioned smokehouse.

Lastly, we will be serving sausage dogs all day, and our restaur-

ant, Johnston's Southern Style Grill, will be open from 11:00 AM to 2:00 PM. We will be serving Smoked half chicken, Pulled BBQ Pork, Smoked BBQ Ribs, and sides such as Mac & Cheese, Baked Beans, and much more.

**DIRECTIONS:** We're easy to find! From Tallahassee take Highway 90 east about 25 miles. We're on the left as you enter Monticello. From the Interstate, take Highway 19 north, go around the courthouse and head west –we're on your right as you leave town!

**AERORISING**  
DRONE SERVICES

ANTHONY RISING  
AERORISINGDRONE@GMAIL.COM  
850-459-6359

*PHOTOGRAPHY & VIDEOGRAPHY*

REAL ESTATE | CONSTRUCTION | MARKETING | AGRICULTURE | ROOF INSPECTIONS | EVENTS | AND MORE!

*\*LICENSED AND INSURED\**

# JUST FRUITS AND EXOTICS:

30 St. Frances Street

Crawfordville, Florida

850.926.5644

info@justfruitsandexotics.com

www.justfruitsandexotics.com

FB: Just Fruit and Exotics

**CONTACT:** Marlee Robinson

**HOURS:** Saturday, May 10, 9 am—4 pm

Sunday, May 11, 9 am—4 pm

Our mission at Just Fruit and Exotics is to offer the greatest variety of quality edible, exotic, and ornamental plants. We aim to provide you with the tools and expertise you need to successfully plant, nurture, and grow each product you purchase. Whether you're a master gardener or just beginning, we'd love to be your nursery of choice.

Just Fruits and Exotics has been growing plants for 46 years now! Now, more than ever, it's smart to grow your own edibles...and we'll help you figure out what will work best for you.

We have an orchard full of some of the best foods and varieties that grow well in our area. We grow the



THOSE ICONS STARRED ARE THOSE AVAILABLE AT THIS SITE

fruit for our customers to taste and we then sell the trees if you want to grow them in your own yard!

While we specialize in fruiting trees, our nursery sells a wide variety of plants that will spark the whole family's taste.

Our gift shop has unique gifts, décor, and garden supplies. Come visit, take a tour with us, and imagine your own orchard.

**DIRECTIONS:** Out of Tallahassee, head south on Crawfordville Hwy (US 319.) turn left at Highway 98. Go 1/2 mile until you see the orchard sign on the right—turn in and park.



220 W Washington—Monticello—850.997.2127

"Here at Tupelo's, we pride ourselves on cooking and baking from scratch with the best ingredients possible. We are open for breakfast and lunch five days a week with a selection of freshly baked pastries and quiche, and a full lunch menu with sandwiches and salads. The bread for all of our sandwiches is baked fresh daily, and the soups and salads often feature locally grown meats and produce. Come visit!



# LADYBIRD ORGANICS:

1211 Waukeenah Highway

Monticello, Florida 32344

850.294.9463

CLCFARM@aol.com

[www.ladybirdorganics.com](http://www.ladybirdorganics.com)

[www.monticellowinery.com](http://www.monticellowinery.com)

**CONTACT:** Cynthia Connolly

**HOURS:** Saturday, May 10, 12 noon—5:00 PM

Founded in 1989 and Certified Organic from the beginning, Ladybird Organics is a 50-acre farm set-up to sustainably produce fruits, vegetables, small grains, and nuts. It was registered as a Florida nursery to propagate plants for expansion and replacements, and for sale. The vermiculture system was developed to produce the rich organic fertilizer—worm castings--used on everything that grows on the farm.

The history of this farm is unique—from its location in the Red Hills bioregion with some of the best water and soil in Florida to the design and layout of the fields and evolution of practices for sustainability. Ten years after beginning the farm, to expand on the sales of fresh grapes and other fruits, and after winning a gold medal at the State Fair in hobby winemaking, we became serious about fermentation. By 2001 we were certified, licensed, and bonded as a Florida Farm Winery with the name Monticello Vineyards & Winery.

Come see it! The vineyard will be flush with Spring growth and the fruit set. A guided farm tour will show you how it began--from the layout of the farm, the choice of infrastructure, the



THOSE ICONS STARRED ARE THOSE AVAILABLE AT THIS SITE

selection of grape varieties and other fruits and our regenerative system. You'll be able to see the worm beds, the hen house, and the kitchen garden. Learn how this farm began and how it continues today in its 36th year.

**DIRECTIONS:** From Tallahassee, take Apalachee Parkway south (about 18 miles) to Waukeenah. A DOT sign with the grape bunch for Monticello Vineyards & Winery indicates to turn left on CR 259/Waukeenah Highway. Go about 8 miles and there is another DOT sign for the winery pointed at the entrance to the farm at 1211 Waukeenah Highway. Signs for Ladybird Organics and Monticello Vineyards & Winery are at the entrance to the farm.

If taking I 10 East from Tallahassee, take Exit # 225 and go north on US 19 toward Monticello. In 3 miles a DOT sign with the grape bunch for Monticello Vineyards & Winery indicates to turn left on CR259/Waukeenah Highway. In one mile another DOT sign indicates to turn left into the farm at 1211 Waukeenah



9077 NE Colin Kelly Highway

850.464.7917



# MADISON RV & GOLF RESORT RAGANS FAMILY CAMPGROUND THE STATION RV RESORT

LOOKS LIKE

*Vintage Florida*

**MADISON  
COUNTY**  
FLORIDA

A few miles off I-10 lies a detour to another era, one with a more relaxed pace and state of mind. It is truly the kind of place where you don't need a vacation to recover from your vacation and recaptures the nostalgia of vintage Florida, a Florida many still long to experience. Fortunately, they can in Madison County.

[VISITMADISONFL.COM](http://VISITMADISONFL.COM)

# LEGACY GREENS:

1037 Union Chapel Road

Quincy, Florida

305.450.6317

Daniel@legacygreens3.com

www.legacygreens3.com

**CONTACT:** Daniel Miranda

**HOURS:** Saturday May 10, 10:00 AM—3:00 PM

At Legacy Greens, we're more than just a farm—we're a fresh start, a family effort, and a flavorful commitment to our community. Located in Quincy, FL, our USDA GAP-certified indoor vertical farm grows produce that's fresh, clean, and available year-round. We are the area's largest indoor hydroponic farm!

In 2020, we combined our backgrounds and expertise to create a business that not only reflected our passion but also served our local community with nutritious, high-quality produce.

Explore the world of microgreens and hydroponics, sample our delicious varieties and get an exclusive look at our brand new Zipfarm hydroponic lettuce system.

Our state-of-the-art equipment and cutting-edge methods en-



THOSE ICONS STARRED ARE THOSE AVAILABLE AT THIS SITE

sure that every bite of our produce is bursting with flavor and goodness.

Don't miss this chance to learn, taste, and experience farm-fresh greens firsthand—we can't wait to see you there!

Legacy Greens is proudly owned and operated by the Miranda brothers: Jordan, Daniel, and Julian.

**DIRECTIONS:** Off I-10 take exit 174 (Gretna/Greensboro), take Hwy 12 North to Hwy 65 South, make a right on Juniper Creek Road, and a left onto Union Chapel Rd. We are the second property on the right - you will see a large red shipping container in front of our warehouse.

---

# LONG FARMS: (U-Pick)

2822 Old Whigham Road

Bainbridge, Georgia

229.246.8086

longfarmsnatural@gmail.com

www.longfarmsnatural.com

Facebook: Long Farms

**CONTACT:** Kelli Long

**HOURS:** Saturday, May 10, 8:00 AM—1:00 PM

*THE FARMER WILL BE ON SITE FOR YOU TO ASK ANY QUESTIONS AND TO EXPLAIN ABOUT THE FARM'S OPERATION AND HISTORY.*

Long Farms is a family farm located right outside of Bainbridge, Georgia. A pick-your-own produce field that spans over 100 acres. Growing over 25 different things!

Along with the Upick, Long Farms also has an on-site fresh farm market where their very own produce and beef is sold.

Long Farms is current operating in its 40th year. A place where



THOSE ICONS STARRED ARE THOSE AVAILABLE AT THIS SITE

the entire family plays a hand in providing quality produce, beef, and a service to their customers.

**DIRECTIONS:** Once you turn into our gates please look for the designated parking areas to the left and right of the drive. Come on into the farm market to let us know you're part of the Farm Tour.

We look forward to meeting you!

# MADISON SEED LIBRARY:

378 NW College Loop

Madison, Florida

Phone: 630.660.1156

Email: MissAnnaMusic@gmail.com

www.ssrib.org

**CONTACT:** Anna Stange

**HOURS:** Saturday, May 10, 9:00 AM—1:00 PM

“Seed Library” - is a place where community members can get seeds for free and is run for the public health.

The Madison County Seed Library, launched in March 2020, is sponsored by the Madison County Libraries with donated seeds and managed by a volunteer curator. Open-pollinated and heirloom seeds are available for check-out and are completely free. If the gardener is successful at growing out their produce or flowers, they are encouraged to save and donate seed back into the seed library to keep it growing!

Ongoing demonstrations will give visitors the opportunity to learn how to save both wet and dry seeds. The curator will an-



THOSE ICONS STARRED ARE THOSE AVAILABLE AT THIS SITE

swer questions about threshing and winnowing seed; organic, open pollinated, heirloom, hybrid, GMO, patented, and determinate and indeterminate seed—and about what and when to plant!

Visitors may “check out” free seeds, participate in seed saving demos, play hands-on seed ID quiz, take home coloring sheets and see saving/gardening information and participate in a seed starting activity. All activities are family friendly!

**DIRECTIONS:** Highway 90 to Madison. Follow signage to North Florida College—turn onto Turner David Drive. Left onto College Loop—378 NW College Loop.



## Build Your Dream Home

TALLAHASSEE'S FARM-TO-TABLE COMMUNITY  
[pinedovefarm.com](http://pinedovefarm.com)



### OAKHAVEN II

5414 Peace Dove Trail

4BR/3BA bath 2,449 sqft, on 1/2 acre lot  
 Features a vaulted ceiling in the living room and gas fireplace. The dining area is designed with wainscoting, and shaker wood cabinets



### WATERFORD III

5410 Peace Dove Trail

3RB/2BA 2,051 sqft, on 1/2 acre lot  
 Features a vaulted ceiling in the family room, and a tray ceiling in the master bedroom. There is a gas fire place, a screened porch and a concrete patio.

Let's find your new home!



Mike Ferrie, REALTOR®  
 850-566-8373  
[mike@mikeferrie.com](mailto:mike@mikeferrie.com)



# MOCCASIN GROVE: (U-Pick)

9214 Herold Hill Road

Tallahassee, Florida

850.274.9124

moccasingrove850@gmail.com

Facebook: Moccasin Grove

**CONTACT:** Ryan Bass

**HOURS:** Saturday, May 10, 9:00 AM—3:00PM

Sunday, May 11, 9:00 AM—3:00 PM

Moccasin grove is a family farm down a long dirt road that offers Upick throughout the year! During the Spring Harvest Farm Tour this year, we will be offering U-pick strawberries. If we're lucky a variety of our peaches may be ready to pick too! As an addition, we will have our freshly harvested vegetables available such as squash, zucchini, cucumbers, tomatoes, peppers, watermelons, and sweet corn! Be sure to ask about our strawberry sherbet as a sweet treat to enjoy before you head to the next farm.

Moccasin Grove has partnered with Better Half Farm this year,



THOSE ICONS STARRED ARE THOSE AVAILABLE AT THIS SITE

and they will have extra room and flowers for U-pick on our farm.

**DIRECTIONS:** Head north/northeast out of Tallahassee on Centerville Road. Centerville becomes "Moccasin Gap Road" as it nears Miccosukee. FOLLOW THE SIGNS Turn onto Herold Hill from Moccasin Gap. Once you are on Herold Hill drive straight down the long dirt road until you see a field on the left. Park in the field and walk to the barn before entering the strawberries.





**BEES—BEES—BEES—BEES**



**AT GRANNY KATS**

**IT'S EVERYTHING BEES!**




**850.997.1947**



**Monticello, Florida**



**Shop our Everything Bee Gift Shop**



**Watch our observation hive!**



**Monticello-Jefferson County**  
CHAMBER OF COMMERCE





# MONTICELLO VINEYARDS & WINERY:

1211 Waukeenah Highway

Monticello, Florida

850.294.9463

CLCFARM@aol.com

www.monticellowinery.com

www.ladybirdorganics.com

(please call 850.294.9463 for website update)

**CONTACT:** Cynthia Connolly

**HOURS:** Saturday, May 10, 12 Noon—5:00 PM

The vineyard is glorious in the Spring! The vines are flush with new green foliage following bud break in March. We welcome you for an afternoon delight!

Monticello Vineyards & Winery is a small Florida farm winery located on the 50-acre farm of Ladybird Organics. Situated in Jefferson County, Florida, the winery features wines made from grapes and other fruits grown here in the Red Hills bioregion.

Over 18 different varieties of Muscadine grapes and other fruits are grown on site. With a focus on the fruit, we offer a diverse range of easy drinking fresh wines—bright whites and chillable reds including our unique White Strawberry, our garnet-colored Blackberry wine, our gold-colored Peach wine, and our fruity, sangria like wine we call Satsuma Sunrise. In addition, we are happy to offer our newest wine, Watermelon Rosé, a salute to the watermelon history of Jefferson County. In the vinifera grape family, we have the classic Italian varietals Pinot Grigio and Pinot Noir and our very special and delicious cream sherry, a Port style



THOSE ICONS STARRED ARE THOSE AVAILABLE AT THIS SITE

dessert wine that we call “Piacere” (Italian for pleasure).

All wines are manufactured on site, handcrafted in small batches and proudly branded with the classic Jefferson County courthouse on the label. From sweet and semi-sweet to dry, there is a wine to please every palate. Quantities, however, are limited so come early!

**DIRECTIONS:** From Tallahassee, take Apalachee Parkway (Hwy 27) south (about 18 miles) to Waukeenah. A DOT sign with the grape bunch for Monticello Vineyards & Winery indicates to turn left on CR259 (Waukeenah Hwy.) Go about 8 miles and there is another DOT sign for the winery pointing at the entrance to the farm at 1211 Waukeenah Hwy.

If taking I 10 to Monticello, take exit #225 and go north on US 19 toward Monticello. In 3 miles a DOT sign with the grape bunch of Monticello Vineyards & Winery indicates to turn left on CR 259. In one mile another DOT sign indicates to turn left into the farm.



Known for our 100% grass fed/  
finished beef. Come visit us!

[info@arrowheadbeef.com](mailto:info@arrowheadbeef.com)

850.270.8804



# NEIGHBORS FARM:

2966 Foxcroft Drive

Tallahassee, Florida

850.209.7750

neighborsfarmtlh@gmail.com

www.neighborsfarmtlh.com

Facebook: neighborsfarmtlh

**CONTACT:** Whitney Burleson

**HOURS:** Saturday, May 10, 9:00 AM—4:00 PM

Yes—we’re that family that dug up the lawn and planted a garden in our front yard. Do you have a similar dream? Curious to see what it would look like? Come meet us. It’s the reason we’re on the Spring Harvest Farm Tour! Walk the garden, check out the greenhouse and meet the happiest chickens—even the hen with one leg!

Our farm stand will have produce, sourdough goods, soaps and more! Everything is made right here by us and our neighbors.

This month we are celebrating 1 year as members of the Red Hills Small Farm Alliance! Our products are available through the Red Hills Online Market and our website. Visit: neighborsfarmTLH.com and follow us on social media for more details leading up to the tour.

**WALK THE GARDEN WITH WHIT!**

Whitney will be walking through the garden and sharing her favorite tools and techniques all day. This is a great opportunity to ask us about anything related to homesteading—garden planning, soapmaking, sourdough, chickens, etc.



INSTAGRAM



FACEBOOK

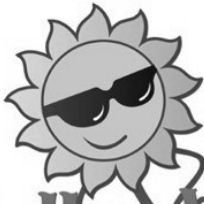


THOSE ICONS STARRED ARE THOSE AVAILABLE AT THIS SITE

Our family is ready to welcome you!




**DIRECTIONS:** We are located in the Foxcroft neighborhood. From Tallahassee, head north on Thomasville Road. Turn right on Forsythe Way. Take a left on Barclay Lane. You will see us when you reach the stop sign at Barclay Lane and Foxcroft Drive! Neighbors are expecting roadside parking from 2958 to 2970 Foxcroft Drive. There will be directional and parking signage from Thomasville Road to Neighbor’s Farm.

From Georgia, head south on Thomasville Road. Use left turn lane to enter the main entrance of the Foxcroft neighborhood. We are .4 miles down Foxcroft Drive on the left.



Holly Woods  
And Vines

“ a whimsical oasis of  
horticultural delights”

**VERNON—FLORIDA**  
Hollywoodandvines.com

# PINE DOVE FARM:

5256 Wild Goose Road

Tallahassee, Florida

727.277.4230

pinedovemarket@mail.com

www.pinedovefarm.com

**CONTACT:** Nathan—farm manager

**HOURS:** Saturday, May 10, 10:00 AM—3:00PM

Sunday, May 11, 10:00 AM—3:00 PM



THOSE ICONS STARRED ARE THOSE AVAILABLE AT THIS SITE

Pine Dove is a community of farm-style homes where residents enjoy a variety of amenities including year round produce, free range eggs, and baked goods from the onsite 2 acre farm. Residents can enjoy over a mile of onsite hiking trails, lakes and plentiful green spaces. Through this farm-to-table lifestyle, Pine Dove Farm cultivates relationships between neighbors and nature while promoting a healthier, more sustainable future.

Spring is such an exciting time of year as a large variety of crops flourish. April to May are the ideal weather conditions that allow us to still offer the last of our cold weather crops as well as our warmer weather crops. Farmer Nathan and Mike will be available to show guests around and explain our methods that we have refined over the past few years of expanding the farm. Guests will be free to explore the gardens, the greenhouse, take

pictures on the antique tractor and meet our flock of hens (and probably bunches of baby chicks!)

We will have a wide variety of produce available including squash varieties, tomatoes, cucumbers, leafy greens. Turnips, carrots, peppers, and eggplants. We will also have fresh eggs and baked goods for sale.

For inquiries about living at Pine Dove contact Mike Ferrie, realtor at 850.566.8373

**DIRECTIONS:** We are approximately 9.5 miles east of Tallahassee down highway 27/Apalachee Parkway. Off Highway 27 turn onto Williams Road. Then cross over Old St. Augustine Road intersection. Turn left onto Lonesome Dove Lane into Pine Dove Farm.

# BENNETT SERVICES

Licensed & Insured  
Family owned and operated

## 850-509-0926

Jefferson county & surrounding area

## 850-728-3563

**Concrete:** drives—patios—repairs—foundations

**Houses:** build—buy/flip—decks—custom cabinets

**Pole Barns:** build (red beam/steel slab)—repairs

**And:** pressure washing—tree removal—renovations

# PLAY OF SUNLIGHT MUSHROOMS:

226 East Palmer Avenue

Tallahassee, Florida

850.570.1445

contact@playofsunlight.com

www.playofsunlight.com

**CONTACT:** Josh Saul

**HOURS:** Sunday, May 11, 9:00 AM—4:00 PM



THOSE ICONS STARRED ARE THOSE AVAILABLE AT THIS SITE

**TOURS OF FACILITY:** tours are limited in numbers of participants on each tour and will begin at 9:30 AM—12 noon—1:30 PM and 4:00 PM. We cannot allow free roaming through the facility due to food safety and safety requirements.

**PRESENTATIONS:** Co-Owners Josh and Kyle will be giving a talk followed by Q & A from 12:30 to 1:30

Play Of Sunlight was founded in 2016 by two guitar players, Tyler Lee and Josh Saul. Since the pandemic, Tyler left Tallahassee and Kyle Jackson took the reins as co-owner and engineer. Our name is an homage to the humble thrill of wild foraging, borrowed from a quote by the mycologist and music composer John Cage “*In woods, we’re misled by leaves or play of sunlight.*”

Wild foraging chanterelles, chicken of the woods, and Lion’s Mane around Tallahassee was one of the ways we made ends meet in the beginning. At this time we were making deliveries to the Miccosukee Root Cellar via bicycle! Although we have scaled our operations, our devotion to translating the beauty of nature to cooks has not changed.

Our team of eight grows and sells over 75,000 pounds of mushrooms each year. We sell to the best chefs all around the state and you can now buy directly through our website!

We will have an info station on the mushroom lifecycle, production techniques and nutrition, and more! There will be fresh mushrooms and grow kits for purchase and we will have games, food, as well as activities for kids.

**SITE DESCRIPTION:** Our site is a warehouse off of South Monroe Street with ample parking. It is an urban setting without tree cover. Please wear closed toes shoes and consider sun cover!

We produce mushrooms almost entirely indoors. The facility is approximately 6,000 sq ft subdivided into four sections, each with a distinct process.

**DIRECTIONS:** Palmer Avenue is about seven blocks south of the Capitol building in Tallahassee on South Monroe Street. We are the white warehouse building with a shipping container in front. The PACE school is behind us and the Downtown Community Church is next door.

## ***Fun farm fact:***

**Pigs can run a seven-minute mile.**

If you've ever been stuck in a pen with an angry sow, you know it's best to get out of the way. But did you know that the average human runner can cover one mile in seven to 10 minutes? On the flip side, pigs can run a mile in seven minutes. That means your odds of winning a race against a pig may be slimmer than you thought.



# PRAIRIE LAKE FARM:

7190 Old Bainbridge Road

Tallahassee, Florida

276.690.6571

prairielakeflorida@yahoo.com

**CONTACT:** August Salmon

**HOURS:** Saturday, May 10, 10:00 AM—4:00 PM

## **WE WILL BE OFFERING TOURS OF THE FARM AND THE ADJOINING CATTLE OPERATION.**

Prairie Lake Farm is a growing and evolving operation incorporating no-till regenerative practices on the beautiful north shore of Lake Jackson. We grow a diverse array of fruits, herbs, vegetables, and flowers, especially selected for our climate.

We will be offering tours of our garden and our small duck and goose flock.

We will be joined by Ayavalla—they will be offering tours of their regenerative cattle operation.

We will also be joined by Apeiron Farms with their poultry and beef finishing feed.



THOSE ICONS STARRED ARE THOSE AVAILABLE AT THIS SITE

There will be complimentary food and drinks along with items for purchase; fresh vegetables, cut flowers, fruit trees, vegetable starts, grass fed beef, and animal feed.

Come watch us grow!

**DIRECTIONS:** Lake Jackson is north of Tallahassee—between Havana and Tallahassee. When heading north, turn off Hwy 27 (N. Monroe Street) to the right onto Old Bainbridge Road. Follow to 7190. When heading south from Havana, turn left onto Old Bainbridge Road and follow until 7190.

If coming from I-10 turn onto Capital Circle NW and proceed north. You will cross Hwy 27 and Capital Circle becomes Old Bainbridge Road. Follow to 7190 Old Bainbridge Road.



## Instant Orchard Packages-Retail Nursery- Edible Landscaping- Bamboo Privacy hedges- Vineyards- Greenhouses- Irrigation- Deer fences

Citrus Apples Nuts Peaches Figs Plums Pears Avocados  
Berry patches Olives Bananas Pomegranates Kiwi and  
much more!

**21190 NW Whitewater grade road, Clarksville, FL 850-451-6222 Monday-Friday 7a-2p, Sunday 4-4 Insta-torhardpackage.com**

We are an all edible nursery and homestead. We grow, sell and install fruit trees and edibles. We have hundreds of varieties of edibles. We install everything from a few backyard fruit trees to commercial orchards and vineyards. Call us today to come by to get your food forest started!



# PROMISED LAND HOMESTEAD:

703 SE Tuten Way

Lee, Florida

850.445.0096

plhomestead@gmail.com

www.promisedlandhomestead.farm

**CONTACT:** Tobi Hester

**HOURS:** Saturday, May 10, 9:00 AM—4:00 PM

## WORKSHOP/PRESENTATIONS: 11AM and 2PM

Which came first—the chicken or the egg? Learn how eggs are incubated and hatched. We'll cover:

- Selecting Hatching Eggs
- What is candling eggs for fertility
- Incubator features and settings
- Caring for eggs during incubation
- How to handle baby chicks

Our farm is bursting with life! Co-grazing, nutrient density, no tilling plowing, pesticides or herbicides describes the pasture land our sheep and cattle share. The chickens enhance the soil while they feast and forage all over the field!

With the hopes of inspiring kids to see farming and local craftsmanship as a viable career path for their future, we invite you to explore the many facets of sustainable farming and ranching and learn why noncommercial practices are crucial to the health of the land and our health too. It is our goal to build a sustainable regional and local food system that brings health and vitality to our communities.



THOSE ICONS STARRED ARE THOSE AVAILABLE AT THIS SITE

Of course we will have the hayride around the farm that takes you on a tour to see our sheep, cattle, rabbits, and chickens. You'll be amazed with our Livestock Guardian Dogs. We have bees too. It is an interactive educational ride where you can hop off the wagon and get up close, ask questions, and really get to explore regenerative sustainable farming practices.

Get your fresh eggs, chicken, beef, lamb, and rabbit while you are here—all non GMO, corn, and soy free.

You will also find honey, beeswax, and honey based products, wool from our sheep and many other homestead items. Livestock and pastures aren't the only things we cultivate—we also specialize in making memories !

**DIRECTIONS:** Many GPS maps do not give accurate directions to our farm. Via I 10 take exit #262, North on County Road 255—immediately before the railroad crossing turn left on SE Farm Road. Proceed 1/4 mile to SE Tuten Way on the left.

Via Hwy 90, south on County Road 255 in Lee. Cross over the railroad tracks immediately turn right on SE Farm Road, proceed 1/4 mile to SE Tuten Way on the left. Look for the signs. Please call or text for help finding us 850.445.0096



*Monticello, Florida*

# PROMISED LAND URBAN FARM:

510 E Orange Avenue

Tallahassee, Florida

707.303.0999

Farmedu@promiselandurbanfarm.org

www.promiselandurbanfarm

**CONTACT:** Whitney Moore

**HOURS:** Saturday, May 10, 10:00 AM—5:00 PM

**WORKSHOPS/PRESENTATIONS:** We will be conducting several sessions:

- Seed starting workshop, Harvesting Tools & Techniques, Market Place, Farm to table cooking demonstration, Soil Building

Promise Land Urban Farm, nestled in the South City area of Tallahassee, stands as a beacon of community resilience and empowerment. Established in 2018, this urban farm has become a focal point for local residents, offering not only fresh produce but also opportunities for direct involvement and community engagement.

The history of Promise Land Urban Farm is rooted in a desire to address food insecurity and economic disparity within the South City neighborhood. As they faced challenges such as limited access to fresh, nutritious food and a lack of job opportunities,

community members came together to transform vacant lots into thriving green spaces.

Initially, the farm began as a grass roots initiative led by passionate individuals committed to making a positive impact in their community. Through partnerships with local organizations and government agencies, Promise Land Urban Farm secured resources and support to establish its operations.

Come see what neighbors and friends can do!

**DIRECTIONS:** East Orange Avenue is on the south side of Tallahassee. Coming into Tallahassee from Apalachee Parkway (Hwy 27) you turn left when you get to the Capitol and go south on Monroe Street. In only a few miles you come to Orange Avenue.

As you near the traffic light on Orange, Polk Street will be on your left. Turn left on Polk and you will come up on the Farm.



THOSE ICONS STARRED ARE THOSE AVAILABLE AT THIS SITE



## Native Nurseries

THE STORE FOR NATURE LOVERS

Native Plants • Ecological Landscape Design

Wild Bird Shop • Nature Gifts

Locally Grown Herb & Veg Plants

Organic Gardening Supplies



1661 Centerville Road, Tallahassee, FL

(850) 386-8882

www.nativenurseries.com

# SALDINO'S RED BARN FARM: (U-Pick)

57 Valley Rise Road

Crawfordville, Florida (in Woodville area)

850.421.1627 (land line)

Facebook: Saldino's-Red-Barn-Farm

**CONTACT:** Tina

**HOURS:** Saturday, May 10, 8:00 AM—7:00PM

Sunday, May 11, 8:00 AM—7:00 PM



THOSE ICONS STARRED ARE THOSE AVAILABLE AT THIS SITE

We are a family friendly farm. We enjoy having families and we also encourage day care and summer camps to visit! Saldino's Red Barn Farm has been open since 1998 and were on our third generation of visitors!

For early picking we have about 400-450 plants of Southern High Bush, early variety . We also have Rabbiteyes blueberries which are a good sized berry and are native to our area. They are ripe until late may – early Jun and will last to mid July.

Southern High Bush are usually a larger berry and have a little

“crunch.” Both are great for jams and cooking! We have 3-4 different varieties of each. We provide the buckets and baskets. We accept cash or checks. No credit or debit cards.

We'd like to share our favorite blueberry recipe with you — **RIGHT OFF THE BUSH** is the very best!

**DIRECTIONS:** From Tallahassee, get on Monroe Street (#363) and head south toward St Marks. Two miles past the one light in Woodville there will be small signs to follow.. This will be about 22 miles from Tallahassee. Turn to the right and follow signs.



## *Blueberry facts!*

- THEY CAN HELP LOWER YOUR BLOODPRESSURE. Based on a recent study, blueberries can improve blood vessel function and blood flow, helping blood pressure....
- THEY CAN STRENGTHEN YOUR HEART
- THEY CAN MAKE YOU SMARTER
- THEY BLAST BELLY FAT
- THEY HELP YOU AGE WELL



Get the Fall Farm Tour  
On your calendar!

OCTOBER 11-12, 2025



RETREAT TO

*Vintage*

FLORIDA

The Madison County

Tourist Development Council

is proud to support Agriculture in Madison County.

MADISON  
COUNTY  
FLORIDA

VISITMADISONFL.COM



# SANDHILLS NURSERY:

19326 Merritt Road

Fountain, Florida

321.720.4520

N.Chambers@sandhillsnativenursery.com

Www.sandhillsnativenursery.com

**CONTACT:** Noah Chambers

**HOURS:** Saturday, May 10, 9:00 AM—4:00 PM

Sunday, May 11, 10:00 AM—4:00 PM

## WORKSHOPS/PRESENTATIONS:

Saturday at 10:00 AM - **"Native Harvest within a Year!"** Educational talk on what native flora you can plant now and benefit from within a year...and how to use them!

Sunday at 11:00 AM—**Compost 101**. Class tailored to participants questions and knowledge base. Includes on-site compost bin demo.

We are a native nursery nestled among the plants and wildlife



THOSE ICONS STARRED ARE THOSE AVAILABLE AT THIS SITE

that were here before us. Our goal is to help make Florida's vast array of native plant species accessible to the public and to educate on the importance of choosing natives for gardens, landscaping and more.

**DIRECTIONS:** From Highway 231 turn onto Silver Lake Road. Follow Silver Lake Road until you turn right on Deep Spring Road. Then take a left onto Western Road. Then take a right onto Merritt Road; there will be a mulch parking lot on the right.

Please note: the nursery is on a dirt road; prepare accordingly.



# Hobby Sawmill

## Slabs, Furniture & Lumber

### (850) 841-0459

[www.timberbamboonursery.com](http://www.timberbamboonursery.com)

# SCHUCKELBERRY FARMS:

21190 NW Whitewater Grade Road

Clarksville, Florida

850.451.6222

instantorchardpackage@gmail.com

www.instantorchardpackage.com

Facebook: Schuckelberry Farms

**CONTACT:** Martin Schuck

**HOURS:** Sunday, May 11, 7:00 AM—7:00 PM



THOSE ICONS STARRED ARE THOSE AVAILABLE AT THIS SITE

**WORKSHOPS/PRESENTATIONS:** This year for the Spring Harvest Farm Tour we will be featuring a workshop on wine making! We will go through all the steps in the process of how you can produce and bottle your own wine at home, starting from step one—growing the fruit! Come visit us on the tour where we will be picking the fruit, crushing, pressing, all the way to bottling and corking the wine. Come join us for this fun and interesting fruit preservation method!

Schuckelberry Farms is a family owned fruit tree nursery and edible landscape company. We specialize in edibles and fruit bearing trees and vines. We grow hundreds of different varieties of fruit trees and have thousands of plants in our inventory

Our featured service is our instant orchard packages. You choose your trees and we design your orchard, deliver and install. We can also set up irrigation and fertilize to give your orchard the best possible growing conditions!

We have installed backyard and commercial orchards and vineyards all over the panhandle. Our business model is to help you decrease your reliance on the grocery store, make the most of your homestead, and increase your self sustainability.

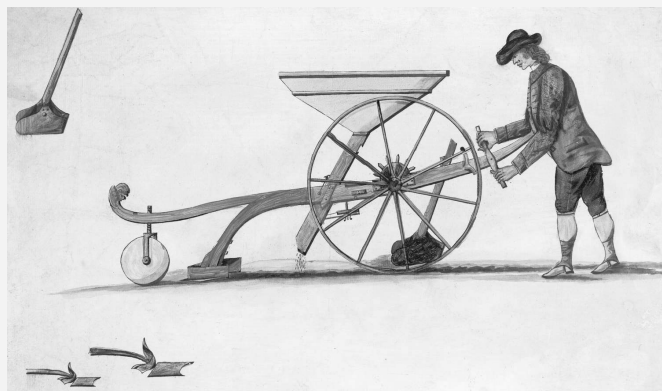
We keep our environment as natural as possible and do not use systemic pesticides or harmful chemicals. We live here and we grow here, so we are here to help you find varieties that will do well in your climate and soil conditions. We can also set up packages so you can harvest fruit all year long.

You can tour our nursery, vineyards, orchards, greenhouse, bee yard, and banana groves, pick our brains, ask all of your questions, and we offer retail purchase, packages, installation and free delivery in most cases.

**PLEASE NOTE:** We are closed on Saturday's. We are open Sunday for the Spring Harvest Farm Tour and our regular business hours are Sunday—Friday.

**DIRECTIONS:** Schuckelberry Farms is located on Whitewater Grade Road, also known as Highway # 287 in Clarksville. From Highway 20 heading out of Blountstown toward Panama City, you will turn right on Hwy #287— 2 miles past the Clarksville gas station. We are 7 miles down #287 on the left hand side.

If you are coming from Marianna/Altha you will take # 274 to Whitewater Grade Road. We will have signs up and you will see our greenhouse in the background and vineyards in the front.



## 5 inventions that revolutionized agriculture

- ◆ THE SEED DRILL (see left image)
- ◆ THE MECHANICAL REAPER
- ◆ THE IRON PLOW
- ◆ CROP ROTATION SYSTEMS
- ◆ ARTIFICIAL FERTILIZERS

# SOUTHERN CRAFT CREAMERY & MARKET:

**CREAMERY:** 2884 Jefferson Street

Marianna, Florida

**MARKET:** 2886 Jefferson Street

Marianna, Florida

info@southerncraftcreamery.com

www.southerncraftcreamery.com

**CONTACT:** Meg Austin

**HOURS:** Creamery - Saturday, May 10, 12:00 noon—3:00 PM

Market - Saturday, May 10, 10:00 AM—3:00 PM

Southern Craft Creamery and Market are the ice cream/coffee shop and storefront for the products from our farm, Cindale Farms, and other surrounding local farms. Our farm is a grass fed dairy that is home to Jersey and Jersey crossed cows. We take great pride in our environmental stewardship, animal care, and production of quality milk.

We love everything about the experience of sharing great food, so we began creating our hand crafted ice cream to share with you. Our award-winning ice cream evolves all the time with



THOSE ICONS STARRED ARE THOSE AVAILABLE AT THIS SITE

amazing new flavors! We believe our ice cream helps make memories and we hope you can taste the time and care and creativity that goes into every scoop.

**DIRECTIONS:** From I 10 take exit #142 onto FL 71 north toward Marianna. Travel 1.8 miles and turn left onto Hwy 90. Travel 3.1 miles and turn right onto Jefferson Street.

**Creamery:** Will be on your right at 2884 Jefferson Street

**Market:** is directly across Market Street from the Creamery.

# SWEET MAGNOLIA RIDGE:

1362 Concord Bainbridge Road

Havana, Florida

757.567.2159

sweetmagnolia1361@gmail.com

**CONTACT:** Vincent Moore

**HOURS:** Saturday, May 10, 9:00 AM—3:00 PM

**WORKSHOPS/PRESENTATIONS:** *Cooking demonstrations at 11:00 AM and 1:00 PM each day, jam making/canning demos, veggie harvesting demos & honey bee demonstration.*

Established in 2018, Sweet Magnolia Ridge is a family owned vegetable garden and living classroom. Located in the Coonbottom Community in Havana, we place emphasis on the FL Dept of Agriculture Best Practices. We have honeybees to pollinate our vegetables and flowers as well as to produce honey.

We will be conducting tours throughout or you can mosey around at your own pace enjoying the hundreds of pecan trees, the orchard and our large sugarcane patch. If all goes well (God



THOSE ICONS STARRED ARE THOSE AVAILABLE AT THIS SITE

willing) there will be fresh veggies for sale. There is an area set aside for our youngest farmers!

**DIRECTIONS:** From Tallahassee, take Hwy 27 north through Havana to the FL/Ga line. Turn right on SR111 & make an immediate right turn on CR 159. The farm is in one mile on the right.

From Bainbridge, take Hwy 27 south approx. 17 miles to the FL/Ga line. Cross the line and turn left on SR 111. Make the immediate right on CR159. Farm is 1 mile on right.

From Cairo, take SR 111 south approx. 15 miles to Ga./FL line. Cross the line and turn left on CR 159. Farm is one mile on right.

# TIMBER BAMBOO NURSERY:

2181 Government Farm Road

Monticello, Florida

850.841.0459

bambooplants@timberbamboonursery.com

Legendarybrowser@gmail.com

Facebook: Timber Bamboo

**CONTACT:** David Harvey

**HOURS:** Saturday, May 10, 9:00 AM—3:00 PM

Sunday, May 11, 9:0 AM—2:00 PM

Timber Bamboo Nursery has been this area's leader in teaching how to grow bamboo for fun and profit. We have been supplying live plants for hurricane proof fencing since 2014.

- We will be demonstrating: how to grow bamboo, edible shoots, propagation, charcoal, and making bamboo vinegar.



THOSE ICONS STARRED ARE THOSE AVAILABLE AT THIS SITE

**DIRECTIONS:** From Monticello, travel east on US Highway 90 to the caution light. Turn left on #257 and go to cemetery. Turn right at cemetery—then in approx. 10 miles turn right onto Government Farm Road.



*A family farm near Havana, Florida built on the premise that healthy foods come from healthy soils.*

*Our farm is a classroom as well.*

*1532 Concord Road, Havana, Florida*

*longviewhavana@gmail.com*



**LONGVIEW**  
**LAND CLEARING**

**Let us help you get the most out  
of your farm**

**Call Cole for estimates**

**850.545.2519**

# Sites on the map

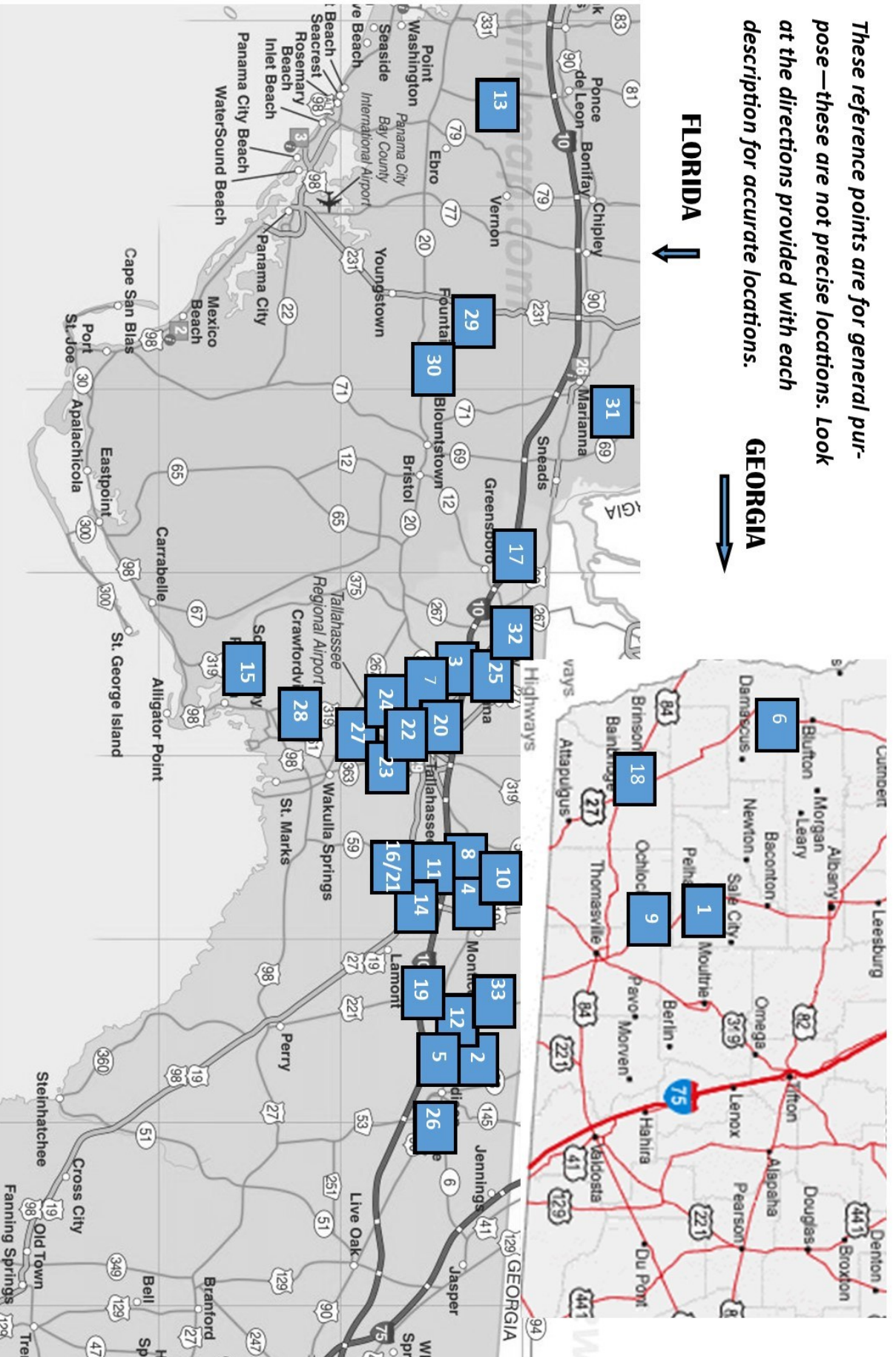


NUMBER	FARM	ADDRESS	
1	4 Pause	1004 Wilder Rd	Pelham, Georgia
2	Allison Acres	9077 NE Colin Kelly Highway	Pinetta, Georgia
3	Ayavalla Land Co.	7190 Old Bainbridge Rd	Tallahassee, Florida
4	Blue Sky Farm	1180 Ashville Highway	Monticello, Florida
5	Deep Roots Meat	11061 W US 90	Greenville, Florida
6	Forty Creek Farm	1377 Cuba Road	Blakley, Georgia
7	Frenchtown Urban Farm	514 Dunn Street	Tallahassee, Florida
8	Full Moon Apiary	220 W Washington St	Monticello, Florida
9	Georgia Grown Citrus	2273 Malloy Road	Ochlocknee, Georgia
10	Golden Acres Ranch	704 Barnes Road	Monticello, Florida
11	Granny Kats	407 Industrial Park Road	Monticello, Florida
12	Heart Bar Farm	4641 NW Honey Lake Road	Greenville, Florida
13	Holly Woods & Vines	2981 Rodeo Drive	Vernon, Florida
14	Johnston's Meat Market	1480 W Washington	Monticello, Florida
15	Just Fruits & Exotics	30 St Francis Street	Crawfordville, Florida
16	Ladybird Organics	1211 Waukeenah Highway	Monticello, Florida
17	Legacy Greens	1037 Union Chapel Road	Quincy, Florida
18	Long Farms	2822 Old Whigham Road	Bainbridge, Ga
19	Madison Seed Library	378 NW College Loop	Madison, Florida
20	Moccasin Grove	9214 Herold Hill Road	Tallahassee, Florida
21	Monticello Vineyard & Winery	1211 Waukeenah Highway	Monticello, Florida
22	Neighbors Farm	2966 Foxcroft Drive	Tallahassee, Florida
23	Pine Dove Farm	5256 Wild Goose Road	Tallahassee, Florida
24	Play of Sunlight Mushrooms	226 E Palmer Avenue	Tallahassee, Florida
25	Prairie Lake Farm	7190 Old Bainbridge Road	Tallahassee, Florida
26	Promised Land Homestead	703 SE Tuten Road	Lee, Florida
27	Promise Land Urban Farm	510 E Orange Ave	Tallahassee, Florida
28	Saldino's Red Barn	57 Valley Rise Road	Crawfordville, Florida
29	Sandhills Nursery	19326 Merritt Road	Fountain, Florida
30	Schuckelberry Farms	21190 NW Whitewater Grade Rd	Clarksville, Florida
31	Southern Craft Creamery/Mkt	2884/2886 Jefferson Street	Marianna, Florida
32	Sweet Magnolia Ridge	1362 Concord Bainbridge Road	Havana, Florida
33	Timber Bamboo Nursery	2181 Government Farm Road	Monticello, Florida

*These reference points are for general purpose—these are not precise locations. Look at the directions provided with each description for accurate locations.*

**GEORGIA**

**FLORIDA**



*The cluster of 7-3-20-22— etc are all right around Tallahassee. The cluster of 8-4-11 etc are Monticello. The cluster 12—2— 5 etc are all around Madison. These are general points for reference.*

# Thank You!

Without the support of the following—the Spring Harvest Tour could not happen!

Please patronize these businesses, farms, and organizations!

